

## MATERIALS

- 76 silver-lined clear 11° seed beads (A)
- 56 gold-lined clear 6° seed beads (B)
- 12 clear 6mm bicone faceted beads (C)
- 8 gold Beadalon™ memory wire end caps (D)
- 4 brass charms (E)
- 12" Beadalon™ Ring Memory Wire
- 4 gold 1½" eye pins
- Super Glue
- Round nose jewelry pliers
- Chain nose jewelry pliers
- Bead sorting dish or cloth
- Tape measure



## USING MEMORY WIRE

### BEAD KEY

- 11° silver-lined clear seed beads (A)
- 6° gold-lined clear seed beads (B)
- ◇ 6mm clear bicone faceted beads (C)
- Gold memory wire end caps (D)
- △ Brass charms (E)

# WINE GLASS TAGS

Wine glass tags are fun projects to make with memory wire. The ring wire is just the right size to fit around a wine glass stem. Use different charms or different colors of beads to keep the tags unique.



## BEADING THE RINGS

1. Break off a piece of memory wire approximately 3" long.
2. Glue a memory wire end cap onto one end (Figure 4-15). Be careful not to glue your fingers.
3. Refer to the Bead Key on the facing page and thread beads onto the wire in the following sequence (Figure 4-16): A-B-A-B-A-B-A-B-A-B-A-B-A-B-A-C-A-C-A-B-A-B-A-B-A-B-A-B-A-B-A-B-A.
4. Push the beads tightly against each other on wire and place a tiny drop of glue on the last A bead to hold all of the beads in place. Let glue set.
5. Break off wire about 1/8" beyond end of beads.
6. Glue the other end cap on the remaining wire end (Figure 4-17).
7. Repeat steps 1 through 6 three more times.

FIGURE 4-15

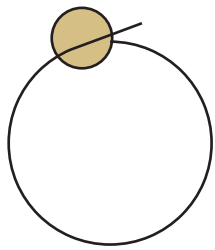


FIGURE 4-16

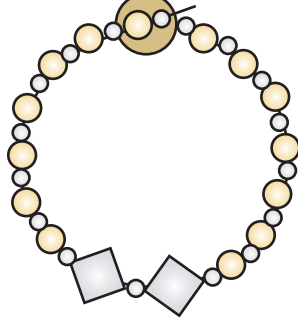


FIGURE 4-17

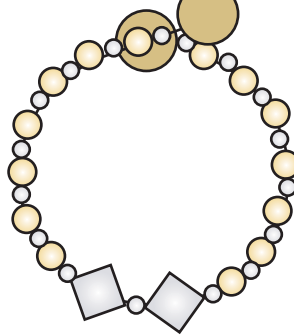


FIGURE 4-18



FIGURE 4-19

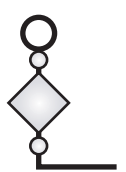


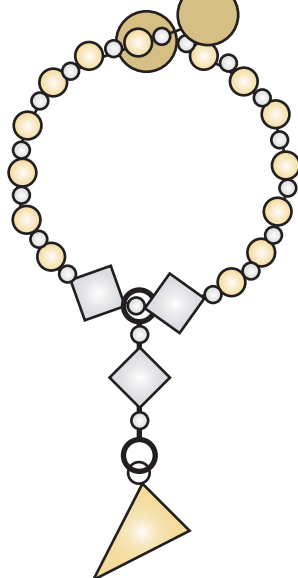
FIGURE 4-20



FIGURE 4-21



FIGURE 4-22



STEP 6: Finished wine glass tags.

## MAKING THE DANGLE

1. Refer to the Bead Key and thread beads onto one eye pin in the following sequence (Figure 4-18): A-C-A.
2. Push beads tightly against the loop, bend the remainder of the pin in a right-angle with pliers (Figure 4-19) and trim end to 3/8".
3. Use round nose pliers to turn a loop in end of pin (Figure 4-20).
4. Thread on a brass charm in loop before closing it and then close the loop to attach the charm to the beaded eye pin dangle (Figure 4-21).
5. Attach the beaded eye pin dangle to the beaded ring by opening the top pin loop and bending it around the ring between the two center clear bicone (C) beads (Figure 4-22).
6. Repeat steps 1 through 5 with the three remaining pins and beaded loops for the four finished varieties shown.