



BACK

VIEW

on-the-go water bottle carrier

Accessorize your water bottle with this cute bear. This carrier is great for when you're on-the-go with *l'eau* and don't want the chilly condensation sogging you up. I like google eyes, but you can use buttons or felt for eyes and make this bear happy at the gym, picnic, local fairgrounds or even riding the metro.

yarn

1 skein Lily Sugar 'N Cream (100% cotton, 120 yds ea) in color #1742 Hot Blue (MC)

1 skein Bernat Cottontots (100% cotton, 171 yds ea) in color #7 Sweet Cream (CC)

hooks and notions

size F/5 (3.75mm) hook

If necessary, change hook size to obtain gauge.

stitch marker

yarn needle

2 buttons

1 pair 15mm black moving eyes (Suzusei)

15mm black triangular plastic nose

gauge

17 sc x 10 rows = 4" (10cm)

finished size

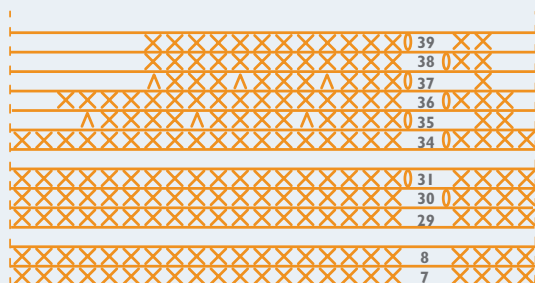
7½" (19cm) tall, not including strap

notes

See page 9 for information on working in the round and decreasing.



BODY



RND 1	6SC
2	12SC
3	18SC
4	24SC
5	30SC
6-29	36SC
BEGIN WORKING FLAT		
ROW 30-34	36SC
35-36	30SC
37-39	24SC

BODY

With MC, ch 4, sl st in first ch to form ring.

RND 1: Ch 1, 6 sc into ring, place marker in last st to mark end of rnd. Do not join in first st—6 sc total.

RND 2: Work 2 sc in each st around, replace marker in last st throughout pattern—12 sc total.

RND 3: * Sc in next st, 2 sc in next st; rep from * around—18 sc total.

RND 4: * Sc in each of next 2 sts, 2 sc in next st; rep from * around—24 sc total.

RND 5: * Sc in each of next 3 sts, 2 sc in next st; rep from * around—30 sc total.

RND 6: * Sc in each of next 4 sts, 2 sc in next st; rep from * around—36 sc total.

RNDS 7-29: Sc in each st around.

Split at Back of Carrier

The following rows form the split at the back of the carrier.

ROWS 30-34: Turn, ch 1, sc in each st around.

ROW 35: Turn, ch 1, * sc in each of next 4 sts, dec; rep from * around—30 sc total.

ROW 36: Turn, ch 1, sc in each st around.

ROW 37: Turn, ch 1, * sc in each of next 3 sts, dec; rep from * around—24 sc total.

ROWS 38-39: Turn, ch 1, sc in each st around. Fasten off, leaving a long tail.

Buttonhole Band

Working along the row ends on the left side of the split, attach MC in the upper right corner. Ch 1, sc in end of first row, sc in end of each of next 4 rows, ch 5, counting backwards, skip previous 3 sc, sl st in next sc. Work 7 sc into ch-5 sp. Continuing across row ends, work 5 sc evenly across next 4 row ends, ch 5, counting backwards, skip previous 3 sc, sl st in next sc. Work 7 sc into ch-5 sp. Sc in last row end.

Fasten off and weave in ends.

GO! GO! GO!



EARS (make 2)

With CC, ch 4, sl st in first ch to form ring.

RND 1: Ch 1, 8 sc into ring, place marker in last st to mark end of rnd. Do not join in first st—8 sc total.

RND 2: Sc in each st around.

RND 3: Sc in each st around to last st, sl st in last st.

Fasten off, leaving a long tail for sewing.

STRAP

With MC, leave a long tail for sewing, then ch 126.

ROW 1: Sc in second ch from hook and in each ch across—125 sc total.

ROW 2: Turn, ch 1, sc in each st across.

Fasten off, leaving a long tail for sewing.

AROUND NOSE

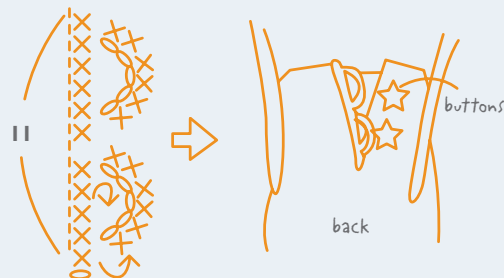
With CC, work as for Ears. Secure plastic nose to center of Around Nose.

AROUND NOSE & EARS

RND 1-3 8SC



BUTTONHOLE BAND



STRAP



Assembly

Sew the Strap to the Body securely 1" to 2" (3cm to 5cm) from the top edge of the bag on opposite sides. Use tail ends and a yarn needle to sew the Ears and Nose to the bag. Secure the eyes to the bag as well. Using the buttonholes as a guide, sew the buttons onto the right side of the split on the back of the bag. Weave in any loose ends.

